

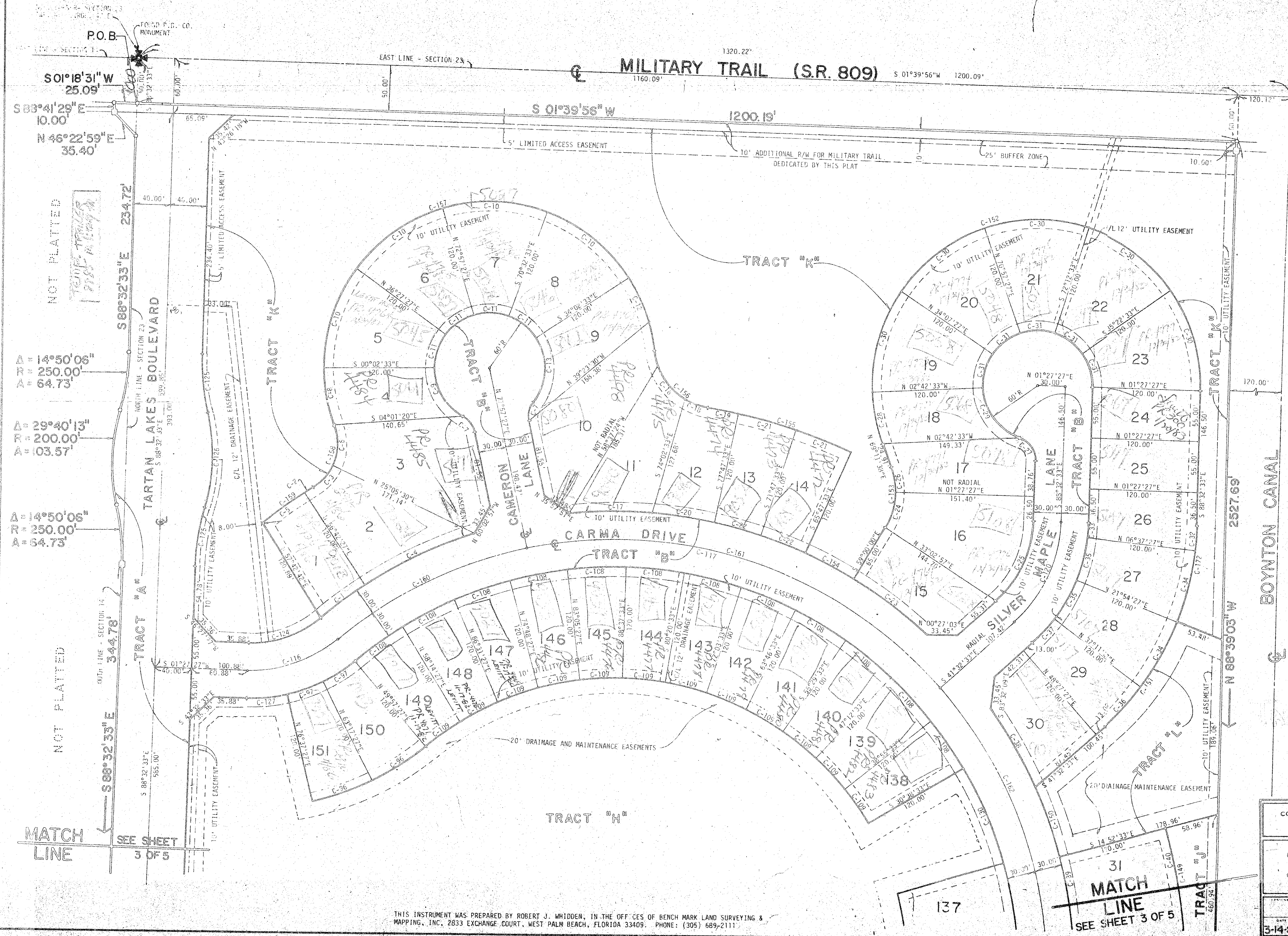
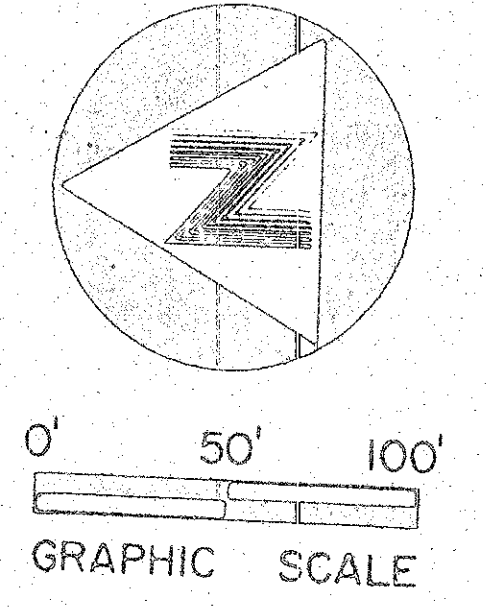
40-1060

TARTAN LAKES, PLAT NO. 1 (P.U.D.)

BEING A REPLAT OF PART OF BOYNTON GARDENS, ACCORDING TO THE PLAT THEREOF, AS RECORDED IN PLAT BOOK 6, PAGE 32, PUBLIC RECORDS, PALM BEACH COUNTY, FLORIDA, AND LYING IN SECTIONS 14 AND 23, TOWNSHIP 45 SOUTH, RANGE 42 EAST, PALM BEACH COUNTY FLORIDA. MARCH, 1980

STATE OF FLORIDA
COUNTY OF PALM BEACH
THIS PLAT WAS FILED FOR
RECORD AT _____ M.
THIS _____ DAY OF _____
A.D. 1980, AND DULY RECORDED
IN PLAT BOOK _____ PAGES
AND
JOHN B. DUNKLE, CLERK
CIRCUIT COURT
BY: _____ DC

166



NOT PLATTED

$\Delta = 14^{\circ}50'06''$
 $R = 250.00'$
 $A = 64.73'$

$\Delta = 29^{\circ}40'13''$
 $R = 200.00'$
 $A = 103.57'$

$\Delta = 14^{\circ}50'06''$
 $R = 250.00'$
 $A = 64.73'$

0316-004

CONRAD W. SCHAEFER CONSULTING ENGINEERS INC.
PALM BEACH COUNTY, FLORIDA

BENCH MARK
land surveying and mapping, inc.

DATE	SCALE	SHEET	TOTAL SHEETS
3-14-80	1"=50'	2	5

P2505

THIS INSTRUMENT WAS PREPARED BY ROBERT J. WHIDDEN, IN THE OFFICES OF BENCH MARK LAND SURVEYING & MAPPING, INC. 2833 EXCHANGE COURT, WEST PALM BEACH, FLORIDA 33409. PHONE: (305) 689-2111